

CCOY ~~11/20~~

ARMoured CAR, DAIMLER, MKS 1 AND 2

TECHNICAL HANDBOOK - MODIFICATION INSTRUCTION

- Notes: 1. This is not a new instruction but supersedes War Office (DME) Workshop Bulletin ('A' vehicles) Serial No. A 159, dated Aug 47.
2. This issue, cancels Pages 1 and 2, Issue 1, dated 8 Oct 53.

SUMMARY

1. This instruction concerns the fitting of an oversize bush to the fluid flywheel, rear casing, when necessary.

Estimated time required to complete this modification: 4 man-hours.

2. Item affected:-

Fluid flywheel, rear casing.

3. Action required by:-

(a) Units affected: Enter the details of this modification in the AB 413 and History Sheet of each vehicle affected.

(b) REME field and base workshop units:-

- (i) When requested by units or when vehicles enter workshops carry out this modification in accordance with para 7 and Fig 1.
(ii) Endorse the modification details in the AB 413 and History Sheet of each vehicle modified.

4. Priority: Group 'C' (ACI 878/49 refers).

5. Stores required:-

VAOS, Section G2

<u>Part No.</u>	<u>Designation</u>	<u>Qty</u>
GB 10461	Bronze, phosphor, round, 3 inches dia	As required

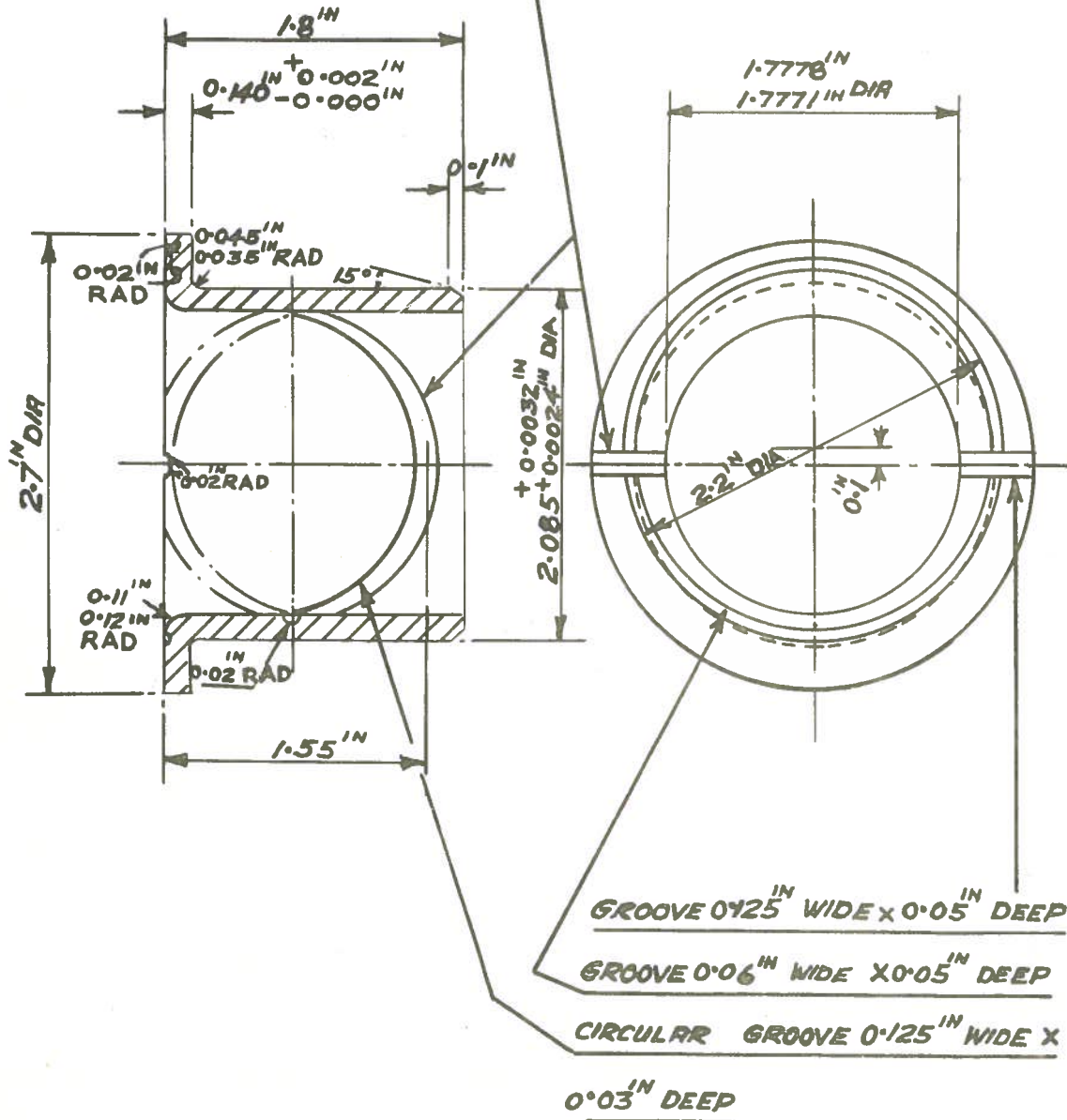
DETAIL

6. When the existing bush is found to be turning in the casing, it will be replaced by a bush manufactured locally.

7. Proceed as follows:-

- (a) Remove existing bush.
(b) Machine bearing housing to within the dimensions of $2.085^{+0.0006}_{-0.0004}$ inches.
(c) Manufacture oversize bush as detailed in Fig 1.
(d) Fit oversize bush to casing.

THIS GROOVE MUST BREAK INTO
THE FACE GROOVE AS SHOWN



VW $\frac{H-257M4}{2-1}$

MATERIAL:- PHOSPHOR BRONZE

Fig 1 - Rear casing oversize bush

Encl. 28 to 57/Maint/4052

END